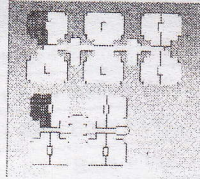
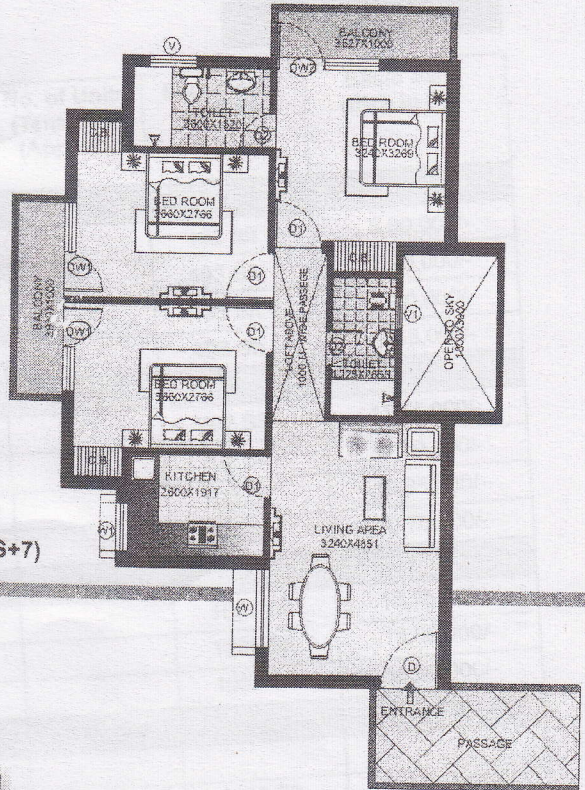


**TYPE - IV *Marigold* (3 BHK)**

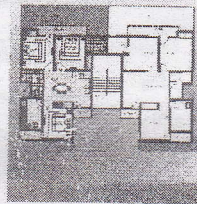
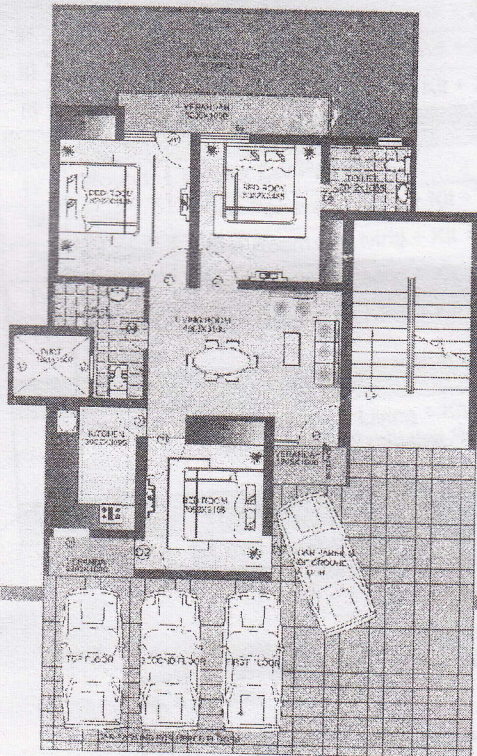
Saleable Area 1100 Sft



KEY PLAN



TYPICAL FLOOR PLAN (S+7)

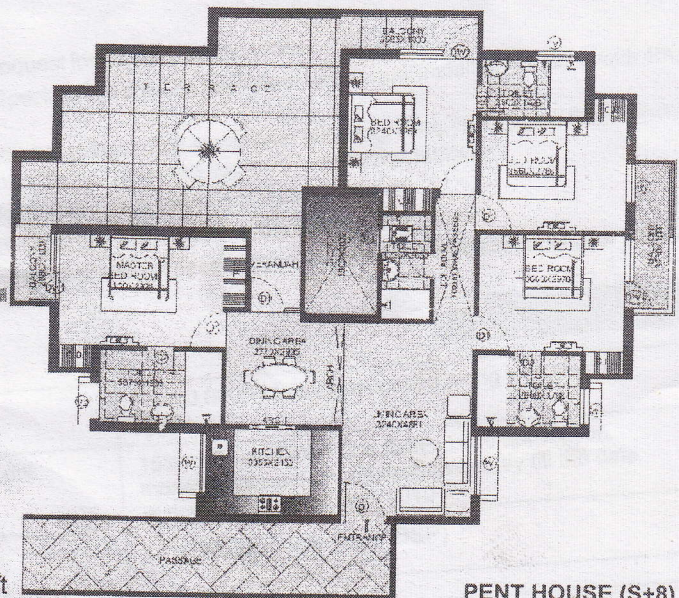


KEY PLAN

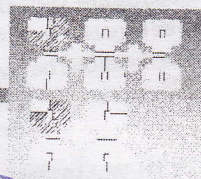
**TYPE - V *Tulip* (3BHK)**

Saleable Area 1095 Sft • Exclusive Rear Lawn Area 235 Sft

GROUND FLOOR PLAN WITH LAWN



PENT HOUSE (S+8)



KEY PLAN

**TYPE - VI *Marigold* (4 BHK)**

Saleable Area 1782 Sqft • Exclusive Terrace Area 391 Sft